

Architect's Plans

The entrance

- Instead of steps and an ugly ramp to a narrow doorway, there is a new glazed entrance with level access and shelter canopy; and the unsightly and obtrusive ramp is removed.

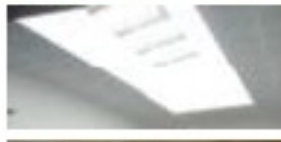
1 - Entrance

accessible
glazed vestibule
timber doors
overhanging canopy
welcoming



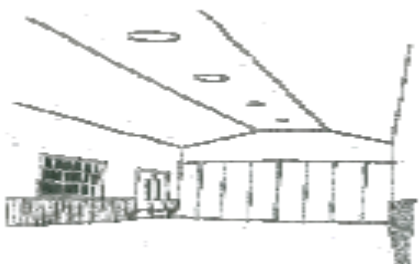
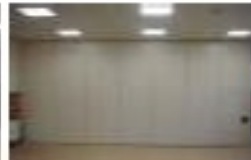
The halls

- the main hall remains much the same but is larger with the stage removed;
- the existing small meeting room space is dingy and only accessible through main hall; the new small hall is considerably larger and brighter, with its own access;
- and both halls will have the ability to be joined together, meaning that the main hall can be extended by 45% to accommodate large activities and functions.



2 - Hall

flexible
folding partition
rooflights
character
dual access
café space



The kitchen

- the existing kitchen is cramped, poorly equipped, difficult to provide catering to the halls and well past its sell-by date;
- the proposed kitchen is large, modern and positioned so that it is easily accessible from both halls and could also serve a garden café area.

Toilets

- the toilet areas would also be renewed with 4 additional ladies toilets (there is only one at present) and a separate disabled toilet at the entrance.

Storage

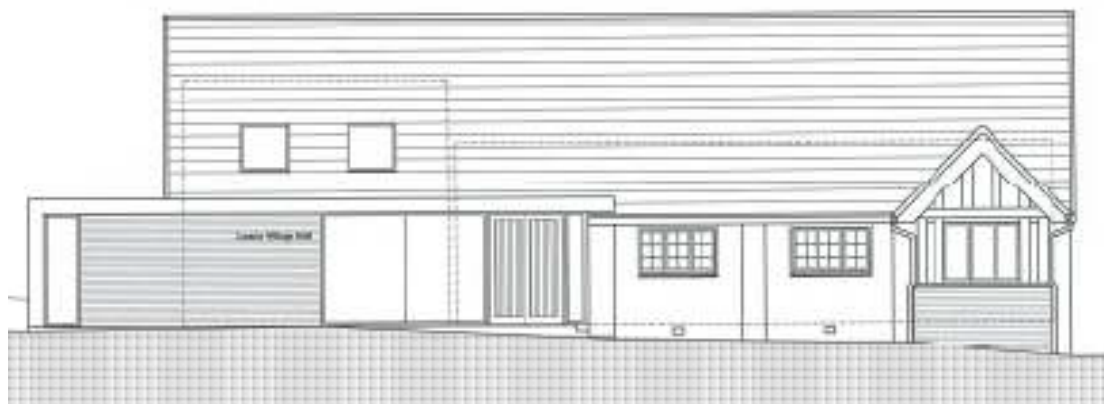
- at present storage is limited or difficult to access (like the upstairs room); instead storage would be organised in a central space with lockable units for users.

Meeting Room

- the plan provides an office and small committee room at the entrance with good security to replace the room up the existing narrow stair, which does not comply with modern building standards.

Garden area

- at the moment the garden area is an inaccessible and unused grass area, which would become a garden patio, directly accessible from the main hall through patio doors with scope for sitting out and an al fresco café.





Front elevation / new entrance as proposed



Rear elevation / new garden as proposed